



THANK YOU
FOR
Sparing Your Valuable Time



PROVIDING &
CARING FOR LIFE

BELLATOR
DIABETIC DIVISION



In Uncontrolled Type-2 DM

R

LimerideTM **1/2**

Glimepiride 1/2 mg

TABLETS

When DIABETES is getting **OUT OF CONTROL**



- **An antidiabetic with least risk of hypoglycemia.**
- **Decreases HbA1c by 1.2-1.9% in patients with type-2 diabetes mellitus, which is not sufficiently controlled by diet and exercise.¹**
- **Increases peripheral glucose utilization by 29%.**
- **Potentially active in lowering risk factors of atherosclerosis in type-2 diabetic patients.**

Sustained & Sure Control

In The Management of Type-2 DM Patients

^R**Limeride**TM  **Forte**

Glimepiride 1mg/ 2mg + Metformin SR 500/1000mg

TABLETS

Combination of Efficiency & Safety



- **First line therapy for the treatment of insulin resistance associated with Type-2 diabetes**
- **Least chances of hypoglycemia as compared to plain sulphonylureas**
- **Very potent sulfonylurea with long duration of action**
- **Dual combination exerts synergistic action**
- **Multiple mode of action ensure better control on blood glucose parameter**

Most Economical as compared to Leading Brands

*In **Type-2 DM** Get Your Patients Sweetness of Life...*

R
Rupert-XR[®] $\frac{500}{1000}$
TABLETS

Metformin SR 500mg/ 1000mg



- Provides excellent glycemic control
- Reduces micro & macro vascular complications
- Exerts positive influence on lipid metabolism
- Reduces risk of stroke, blindness, heart & kidney diseases
- Provides additional benefits counteracting several cardiovascular risk factor

Diaset med : 1999 Dec. 16 (12) 1016-24

Rupert-XR^{500/1000}... The GOLD STANDARD therapy for Diabetes

In Type-2 DM patients **UNCONTROLLED** on monotherapy & dual therapy

Rx

Limeride™

Glimepiride 1mg/ 2mg+ Metformin SR 500mg+ Pioglitazone 15mg

TABLETS

MP-1

MP-2

Plus power for Sure Diabetes Control

GLIMEPIRIDE

- Stimulates the insulin release
Inhibits gluconeogenesis

METFORMIN

- Decreases hepatic glucose output
Increases glucose utilization

PIOGLITAZONE

- Acts primarily by decreasing
insulin resistance



Better patient compliance due to lesser pill load & increased adherence to therapy

In Comprehensive Control or Type 2 Diabetes

R **Limeride**TM **MV (1/.2)**
MV (1/.3)

Glimepiride 1mg + Metformin SR 500mg +
Voglibose 0.2mg/ 0.3mg

TABLETS

R **Limeride**TM **MV (2/.2)**
MV (2/.3)

Glimepiride 2mg + Metformin SR 500mg +
Voglibose 0.2mg/ 0.3mg

TABLETS

Victory Over Diabetes



- ◆ Three different drugs, three different modes of action
- ◆ Prevents long term glycemic relapse
- ◆ Better option before switching to insulin from dual drug combinations

TYPE 2 DIABETES

- Improve compliance and control
- Better results are achieved at lower doses with fewer side effects
- Triple drug combination for comprehensive glycemic control

...Three Dimensional Approach In Treating Diabetes

When Conventional Therapies are Insufficient, Add..

TOIVOLTM FORTE

Teneligliptin 20 mg + Metformin 500/1000 mg SR Tablets

Teneligliptin - A Gliptin with Different Structure, Action and Benefits



Better Choice, Better Effects

- ◆ Significant reduction in HbA1c, FPG, PPG
- ◆ Improves glycemic control in patients uncontrolled on
 - **Metformin, SU, TZD**
 - **Insulin**
- ◆ No dose adjustment required in renally impaired patients
- ◆ Improves β -cell function and insulin resistance
- ◆ Improves LV function, endothelial function & adiponectin levels

Also Available:

TOIVOLTM
Teneligliptin 20mg TABLETS

Glycemic control throughout the Day with Vildagliptin

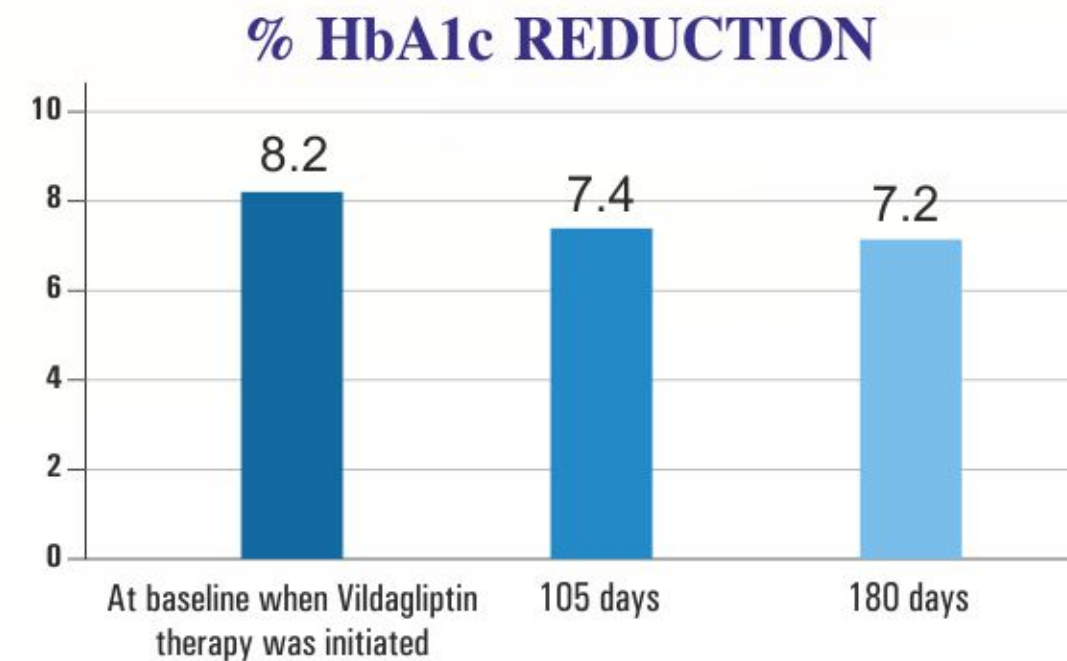
VONKDA[®]-M

Vildagliptin 50 mg + Metformin 500mg SR

TABLETS

Incretin enhancer... Superior control

- Proven safety & efficacy with 24 hrs control.
- Significant reduction in FPG, PPG & HbA1c
- Insulin dose reduction with less hypoglycemia



SIGNIFICANT HbA1c REDUCTION AT 105 AND 180 DAYS
in a real-life clinical setting with initiation of Vildagliptin therapy¹

VILDAGLIPTIN, METFORMIN

References:

1. Van Gaal L, Hermans MP, Daci E, Denhaerynck K, De Meester L, MacDonald K, Abraham I, Vancayzeele S, Maris M. Effectiveness and Tolerability of Vildagliptin and the single Pill Combination of Vildagliptin and Metformin in "Real-World" Management of Type 2 Diabetes Mellitus: The G-Force Study. Diabetes Therapy. 2019 Mar 1:1-5 Available From: https://www.ncbi.nlm.nih.gov/pmc/articles/PMC6531546/pdf/13300_2019_Article_601.pdf Accessed on 10th June 2019.

For the management of type-2 diabetes.....

R **TAKUZONETM-M15**

Pioglitazone 15mg + Metformin SR 500mg

TABLETS



PIOGLITAZONE

- An thiazolidinedione anti diabetic agents.
- Decreases insulin resistance in the periphery and in the liver resulting in increased insulin dependent glucose.
- Disposal and decreased hepatic glucose output.

METFORMIN

- Provides additional benefits counteracting several cardiovascular risk factor.
- Improves lipid profile by covering triglycerides & increasing HDL.

Together Each Achieves More...



*In the management of **Type 2 Diabetes***

Rx

LiclamercTM-60

Gliclazide 60 mg OD

TABLETS

Slashes Sugar... Improves Life



Type 2 Diabetes

- » Significantly reduces blood glucose level.
- » Increase the sensitivity of beta-cells to glucose.
- » Restores peripheral insulin sensitivity.
- » Reduces oxidative stress of beta-cells probably due to its radical scavenging activity.
- » Reduces plasma cholesterol and triglyceride level.
- » Effective glycemic control over 24 hours provides benefit of once daily dosing.

Indicated In:

- » DIABETES IN THE ELDERLY
- » DIABETES WITH VASCULAR COMPLICATIONS
- » NON-INSULIN DEPENDENT DIABETES MELLITUS
- » DIABETES WITH OR WITHOUT OBESITY IN ADULTS

Liclamerc-60...Prevents Blood Clotting And Hemiplegia

Beyond Glycemic Control

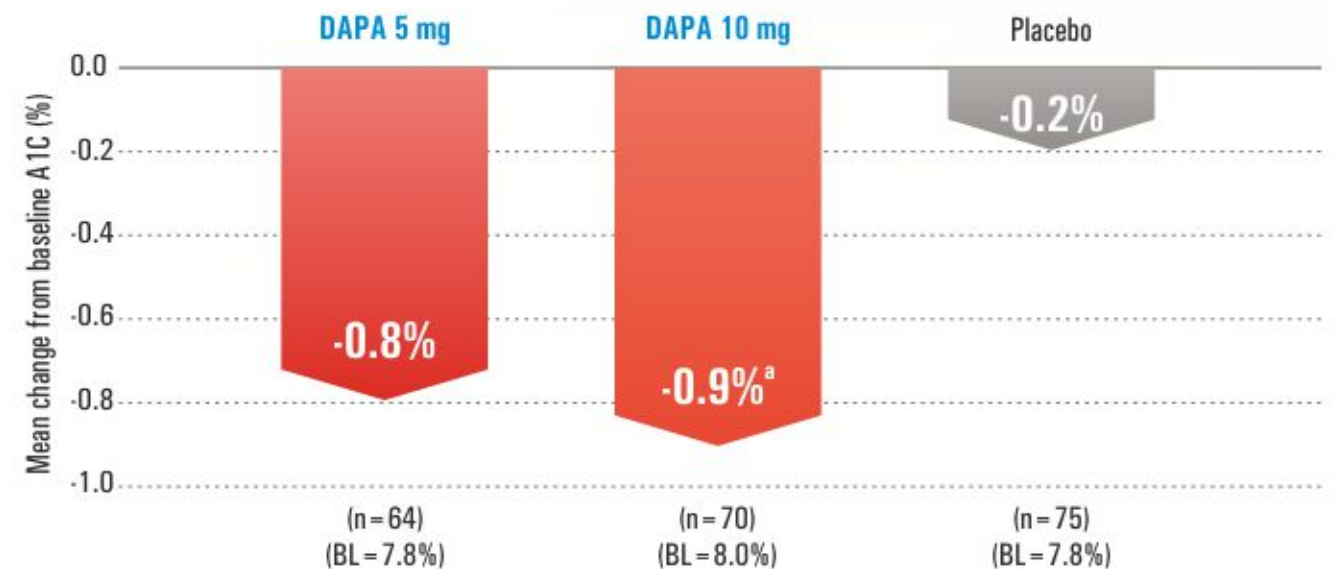
Dafglizin[®] **5**/**10** Dapagliflozin 5/10 mg TABLETS

- ▶ As an adjunct to diet and Exercise to improve Glycemic control in adults with Type 2 Diabetes Mellitus.
- ▶ Provides HF benefits in patient with or without T2DM
- ▶ Additional Clinical benefits including
 - Significant Body weight loss
 - BP Reduction



SIGNIFICANT REDUCTION IN A1C LEVELS¹

Primary end point: Mean reduction in A1C levels with Dapagliflozin at 24 weeks^{1,2}



^aP < 0.0001 vs placebo.

BL = baseline.

Values are last observation (prior to rescue for rescued patients) carried forward and represent adjusted mean change from baseline

References:

1. Dapagliflozin [package insert]. Wilmington, DE: AstraZeneca Pharmaceuticals LP; 2020.

2. Ferrannini E, Ramos SJ, Salsali A, Tang W, List JF. Dapagliflozin monotherapy in type 2 diabetic patients with inadequate glycemic control by diet and exercise: a randomized, double-blind, placebo-controlled, phase 3 trial. Diabetes Care. 2010;33(10):2217-2224.

Right Move to treat **heart** complications....



R

RODUGAZ[®]

10

20

Rosuvastatin 10/20 mg

TABLETS

Delivers **More...**

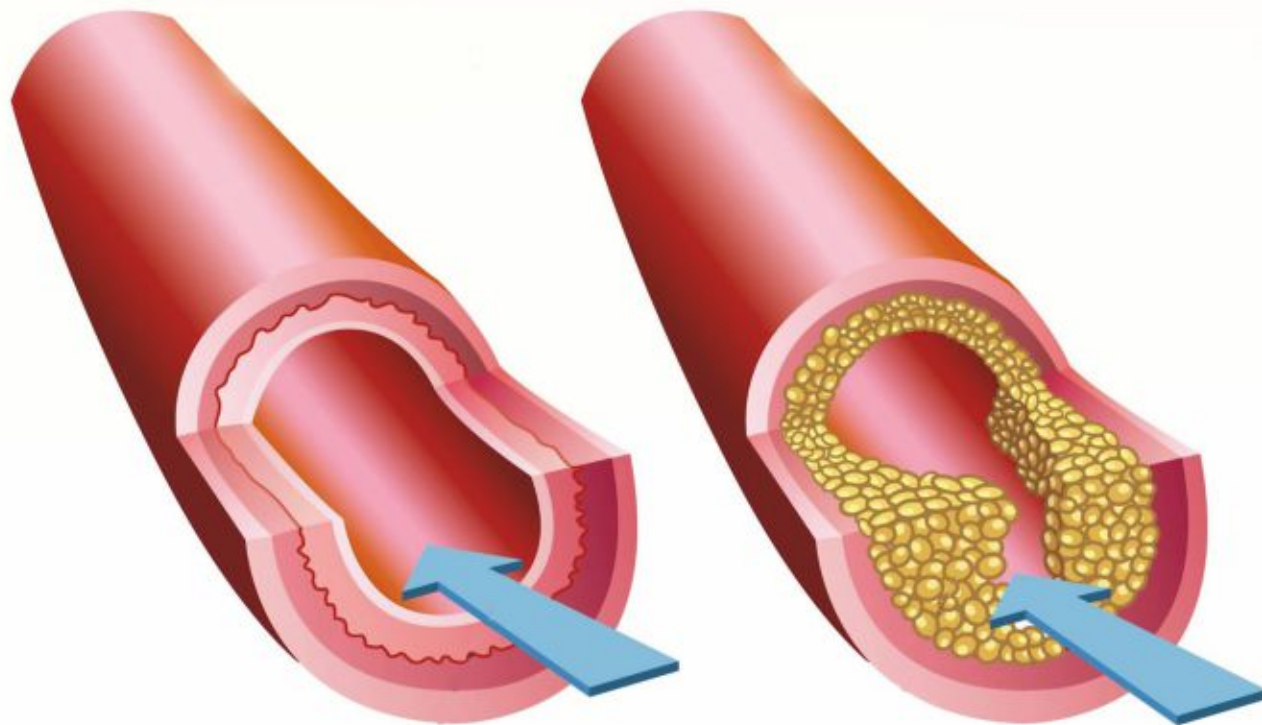
Results from STABLE study

- In patients recommended PCI or coronary angiography, Rosuvastatin significantly reduced Necrotic Core of the plaque, total Plaque volume & Thin-cap fibro atheroma volume

In secondary prevention of CV events

- Compared to Atorvastatin 80mg, Rosuvastatin 40mg offers greater reduction in MACE

(Major Cardiovascular Events) in high risk patients



RODUGAZ **10/20** ...With the healthy Heart, The Beat Goes on

In Secondary prevention of CAD

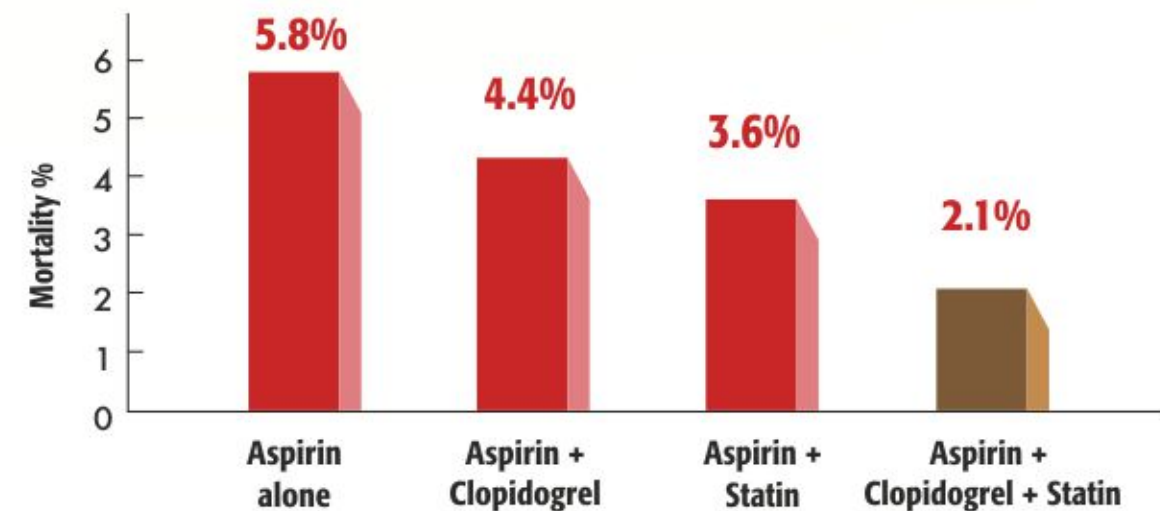
Rodugaz[®]-Gold 10/20 CAPSULES

Aspirin 75mg + Clopidogrel 75 mg + Rosuvastatin 10mg/20mg

Hi-Tech Statin + Aspirin + Clopidogrel



Study on 15,693 Patients
6 months Mortality rate in Post discharge patients¹



**Lowest mortality in post discharge patients
when Statin is combined with DAPT (Aspirin + Clopidogrel)**

For excellent control of Hyperlipidemia & Anti Platelet activity

Rx

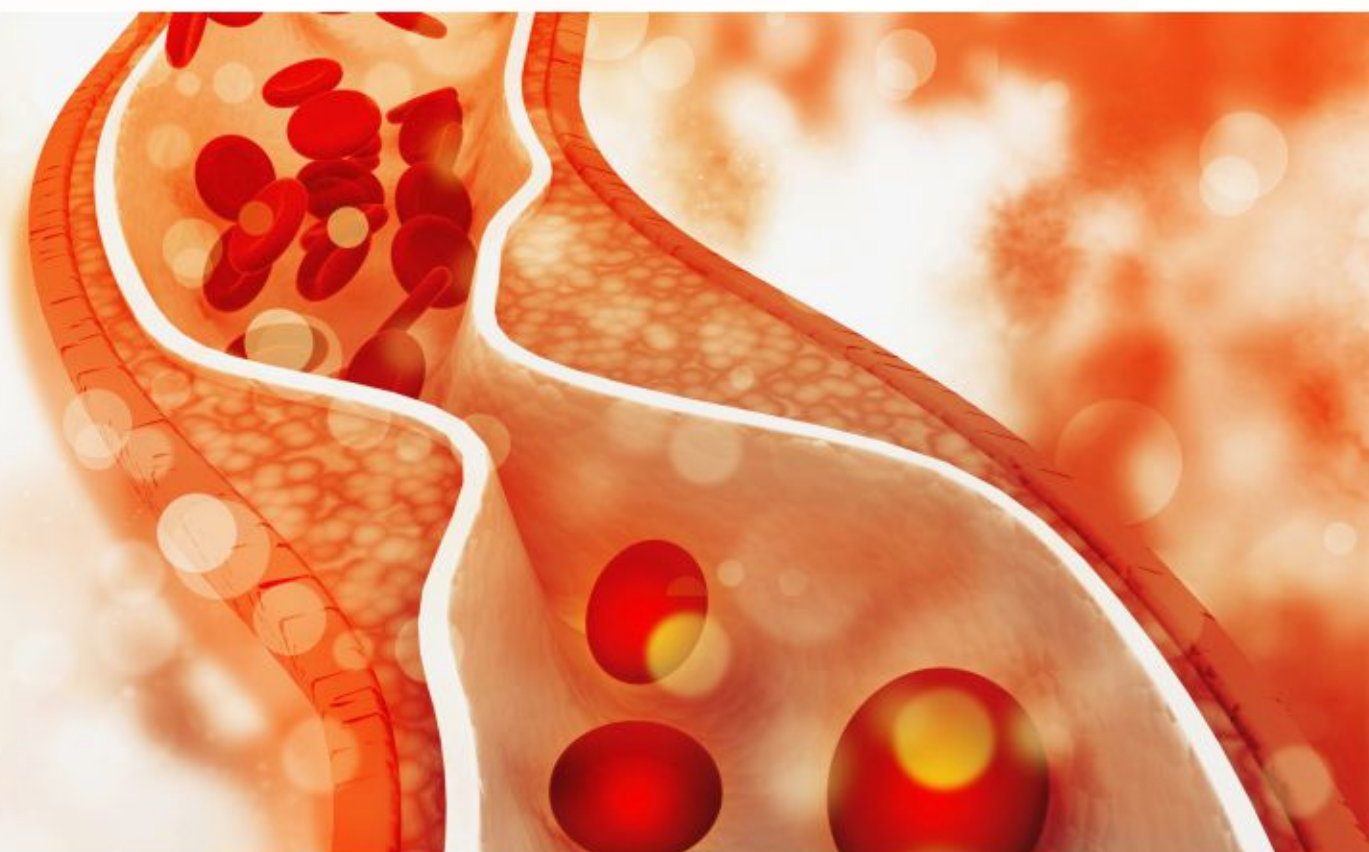
RODUGAZ[®]

AS-10

AS-20

Aspirin 75mg+ Rosuvastatin 10mg/20mg

CAPSULES



- Has high uptake into and selectivity of action in Liver
- Increases the number of hepatic LDL receptors on the cell-surface
- Enhances uptake and catabolism of LDL
- Inhibits hepatic synthesis of VLDL
- Thus reduces the total number of VLDL and LDL particle
- Significant improvement in Lipid profile in dyslipidemic patients
- Reduces future risk of atherosclerotic vascular events

Indicated In:

Hyperlipidemia and mixed Dyslipidemia

Hypertriglyceridemia

Primary Prevention of cardiovascular Disease

RODUGAZ[®] AS-10
AS-20

Revises Limits...

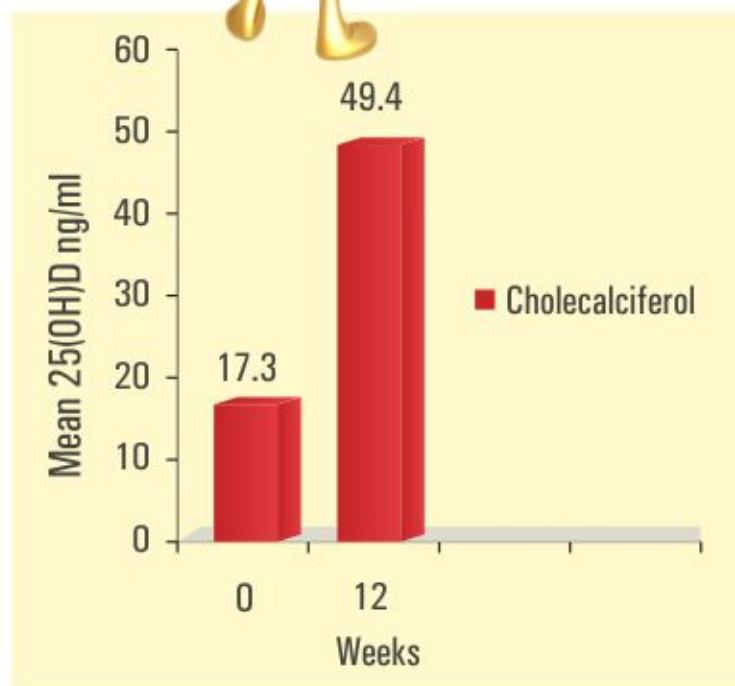
Add *Sunshine* to Life with...

ABEQUA-D3™

Cholecalciferol 60000 I.U.

SOFTGEL CAPSULES

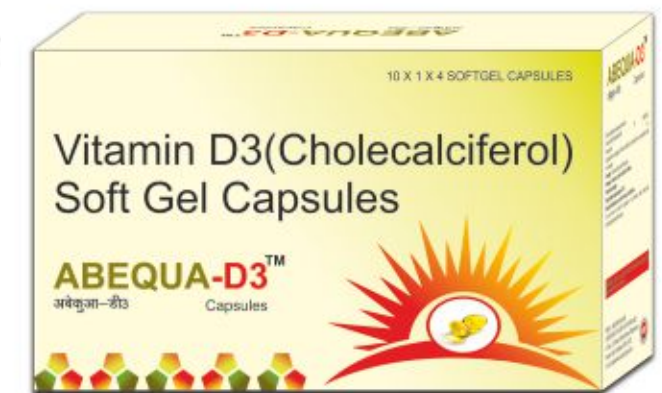
FAST ABSORPTION+HIGH BIOAVAILABILITY HIGH EFFICACY



IN:

- Osteoporosis
- Fracture Healing
- Diabetes
- Pregnancy & Lactation
- CVD
- Hypertension

- More effectively raise 25(OH)D Levels than ergocalciferol¹.
- Increases serum 25(OH)D conc. in patients with CKD from 17.3 ng/mL to 49.4 ng/mL at week 12¹.
- Better control of mineral metabolism & reduces cardiac dysfunction².
- Reduces incidence of osteoporotic non-vertebral, hip and non-vertebral non-hip fractures³.
- Reduces bone pain & Increase muscle strength^{5,6,7}



ABEQUA-D3...An ideal treatment option for Vitamin D deficiency

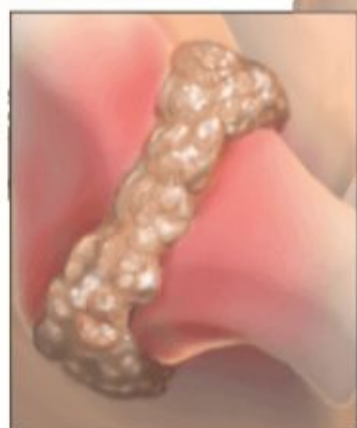
For the Safe Management of **Hyperuricemia**

Rx

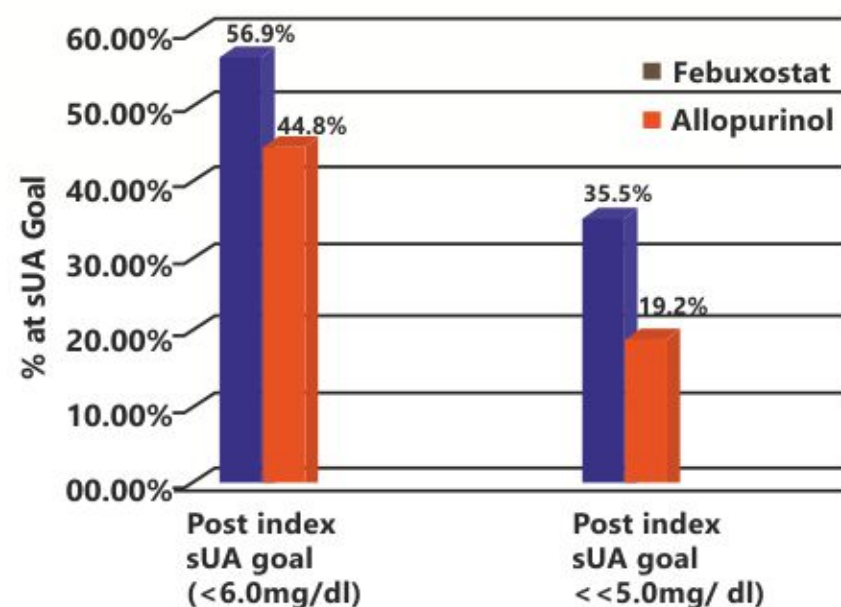
FebbruxanthTM-40

Febuxostat 40mg

TABLETS



- Effective in reducing serum urate in hyperuricemic patients with gout
- Effective in treatment of mild-to-moderate renal/ hepatic impairment with dramatic effect on serum urate level
- Safe in patients who are hypersensitive to allopurinol



Proportion that achieved target serum urate (sUA) in patients treated with Febuxostat & Allopurinol³

Chronic Management
Of Hyperuricemia In Patients With Gout



Febbruxanth-40 ...TARGETED ACTION FOR QUICK CONTROL