



THANK YOU
FOR
Sparing Your Valuable Time



CRITICARE
CRITICAL CARE DIVISION




WE CARE For **YOUR HEALTH** 

In The High Risk Pseudomonas & Enterococcal Infections

Rx BONPIP LYO™ 4.5

Piperacillin 4gm + Tazobactam 0.5gm

INJECTION

- 
- Empiric therapy for CAP & HAP at risk of Pseudomonas infections^{1,2}
 - Surface treated vials - optimal dose delivery³
 - Bromo butyl stoppers - prevents moisture entry³

In

- Community Acquired Infection
- UTI • SSTI • HAP
- Peritonitis
- Appendicitis

...Deactivate therapy for sure eradication that saves life

Above & Beyond...

DUMIPRAZ[®]-40

Esomeprazole 40 mg

INJECTION

16 HRS

Acid control Guard..

*Maintains of intragastric pH > 4 more Than 16 Hours
Better Mucosal Healing AS Compared to Other PPIs*

In The Management of

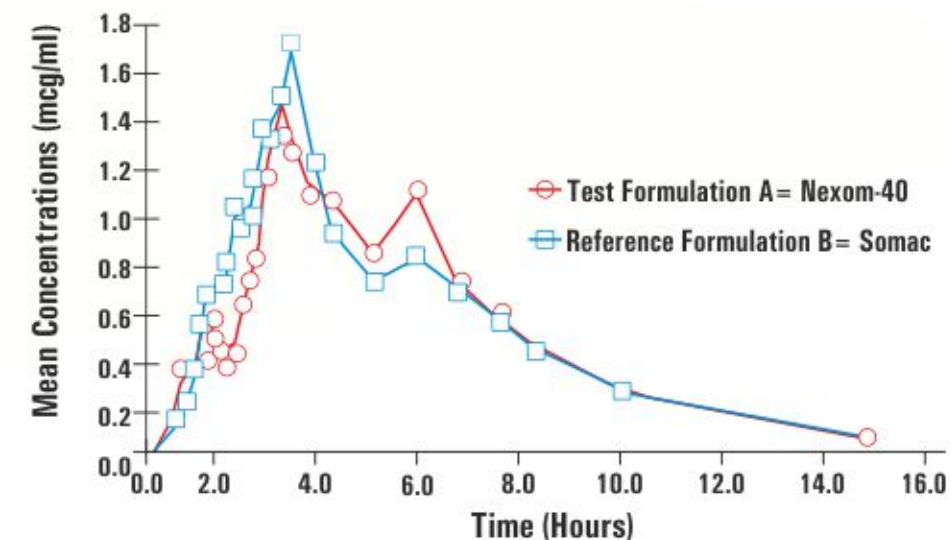
Dyspepsia | Reflux Esophagitis | Gastric Ulcer
Gastritis | Concomitant With NSAIDs
Treatment of Gastroesophageal Reflux
Disease During Pregnancy*

*Gastroenterol Hepatol (N.Y).2012 Nov; 8(11): 763-764

**"CATEGORY B DRUG BY USFDA,
SAFE TO USE DURING PREGNANCY"³**

**'Bioequivalence: The Gold Standard for
Assessing Drug Performance'^{1,2}**

**Bioequivalence is Similar to Its Original Reference Formulation¹
Mean Plasma Esoprazole Concentration Versus Time¹**



DUMIPRAZ-40 ...THE ACID SUPPRESSOR

The Trusted Resolution of Urgent Gastro Dudenal Condition...

^R DUMIPANTM

Pantoprazole 40mg

INJECTION



Treatment of choice in acid control¹

- ➔ Ensures superior acid control¹
- ➔ Prevents rebleeding in 95.2% peptic ulcer²
- ➔ Effective prophylaxis in SRMD & GERD²

Provide:

1. Potent & quick acid control
2. Definite night time efficacy
3. Prevents of symptomatic relapse

In

- ⊖ Acid Peptic Disorders in Hospitalized Patients ⊖ GI Bleed
- ⊖ GERD with Esophagitis ⊖ Zollinger ellison syndrome

DUMIPAN...The Prompt Solution in **Hyper Acidity Emergency**

Protect Body from Disease with..

℞

ASCOBON™

Ascorbic Acid /Vitamin C (1500mg/6ml) INJECTION



- » **Vitamin C is an antioxidant that increases extracellular collagen production¹**
- » **It is important for immune cell functioning²**
- » **Severe vitamin C deficiency may cause scurvy due to its role in collagen synthesis.³**

- » Boosts immunity & protect body from disease, allergies & environment related illness
- » Regulates blood pressure levels
- » Treat viral infections
- » Reduces oxidative stress
- » Prevent cardiovascular disease
- » Maintain healthy skin & wrinkling
- » Essential for body to maintain collagen

ASCOBON **Manages Scurvy...Reduces oxidative stress**

Make your **1st** move in hospital infections

In Moderate To Severe Infections

R
TrimercTM-SB 1.5
Ceftriaxone 1gm + Sulbactam 500mg
INJECTION



The Legendary Power in Critical Times

- Effective 1st line treatment in hospital infections¹
- 96% susceptibility to CTXM producing E.coli²
- More than 100% enhancement of susceptibility against Gram negative bacilli²

In

- Complicated UTI
- Bone & Joint infections
- Nosocomial infections
- Septicemia
- Intra abdominal infections
- Surgical Prophylaxis

In The Management of Community Acquired Pneumonia

R **TRIMERC-1GM**

Ceftriaxone 1gm

INJECTION

Handle resistant infections with perfection



➤ Effective 1st line treatment in hospital infections¹

➤ Recommended by

- WHO Model Prescribing Information
- Goodman & Gilman
- Harrison's Principles of Internal Medicine



In

- Pneumonia
- Bacterial Septicemia
- Urinary tract infections
- Meningitis
- Typhoid fever
- Intra Abdominal Infections

Special Conditions Needs Special Antiemetic Action

Rx

NEXSET™ 2ML

Ondansetron 4mg

INJECTION



- Specific 5HT₃ receptor antagonist provides better antiemetic action
- Superior to metoclopramide & other conventional agents
- Strong prophylactic anti-emetic efficacy
- Treatment of choice for young children undergoing surgery of chemotherapy

In

- Chemotherapy Induced Nausea & Vomiting
- Radiotherapy Induced Nausea & Vomiting
- Post Operative Nausea & Vomiting

NEXSET 2ML ...For Special Antiemetic action

Long Term High dose Mono therapy for severe infections

INGWAZ™

Imipenem 500mg + Cilastatin 500 mg

INJECTION



The time tested empiric therapy

- ◆ Potent broad spectrum antibacterial for IV administration
- ◆ IDSA* recommended initial EMPIRICAL treatment in intra abdominal infection¹
- ◆ Highly documented & recommended in Febrile neutropenia
- ◆ Wide spectrum action against aerobes & anaerobes

In

- Infections in Dialysis Patient
- Intra Abdominal Infections
- Gynecological Infections
- Diabetic Foot Infections
- Endocarditis
- LRTI & UTI Infections

Offers High Clinical Success Rate:

Indications	Age Group	Clinical Success Rate
Complicated Intra-abdominal infections	Adult	86.60% ³
Sepsis		82% ⁴
HAP & VAP (Nosocomial Pneumonia)		78.20% ⁵
Febrile neutropenic patients	Children	95.50% ⁶
Neonatal Klebsiella Pneumoniae sepsis		73% ⁷

Widely prescribed immediate performer

1. CID 2010;50 (15 January) • Solomkin et al
2. American Journal Of Respiratory And Critical Care Medicine Vol 171 2005
3. Antibiot Khimioter. 2003;48(3)4-41.
4. Can J Infect Dis Vol 9 No 4 July/August 1998 * IDSA - Infectious Disease Society of America
5. Diagn Microbiol Infect Dis. 2010 Oct;68(2):140-51.
6. Asian Pacific Journal of Cancer Prevention, Vol 10, 2009
7. Indian J Pediatr. 1998 Jan-Feb;65(1):121-9
8. Martindale, 35th Edn Vol 1 & Nelson text book of pediatrics, 18th Edn, 2007, Vol 1 pg 1116

In Life Threatening Infections

R

MELOQARTEM™

500

1GM

Meropenem 500/1000mg

INJECTION



The Time Tested Well Tolerated Antibiotic

- Highly active against Gram Positive, Gram Negative as well as anaerobic organisms
- Penetrates well into tissues and body fluids
- Exhibits superior potency over imipenem (four to 32 fold greater) against Enterobacteriaceae isolates especially proteus mirabilis

In

- LRTI (HAP/VAP) • UTI
- Febrile Neutropenia • SSTI
- Meningitis • Septicemia
- Intra Abdominal Infection
- Nosocomial Infections

MELOQARTEM™ **500** **1GM** ...The Anti Effective Warrior in Urgent Need

Ultimate Warrior

Rx

MELOQARTEM™-XP

Meropenem 1000mg + Sulbactam 500mg

INJECTION



Fixed dose combination of Meropenem 1 g & Sulbactam 0.5 g injection has excellent efficacy & good tolerability in the management of lower respiratory tract infections caused by Gram -ve pathogens in adults³

Well Tolerated Acceptable & Safe

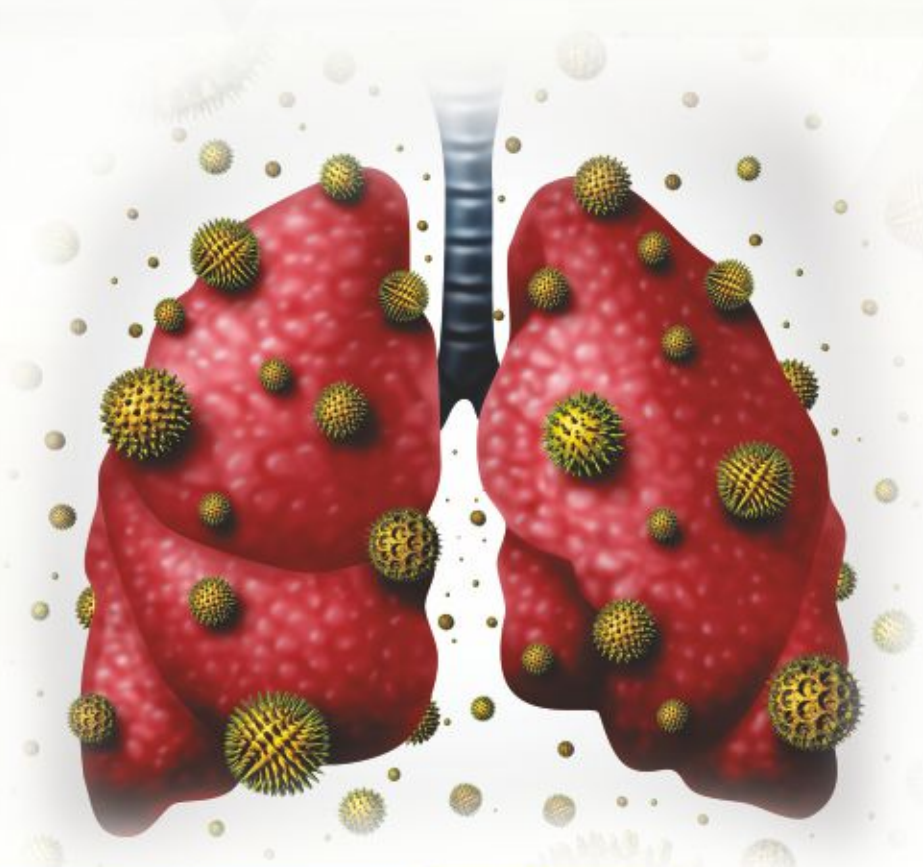
- Synergistically active & safe fixed dose combination¹
- Sulbactam inhibits plasmid mediated metallo- β -lactamases¹
- Meropenem plus sulbactam was effective against multiresistant isolate of *A. baumannii*²

In

- SSTI
- Intra Abdominal Infection
- Bacterial Meningitis
- HAP
- Septicemia
- ICU Infection
- Gynaecological Infection
- Febrile Neutropenia
- LRTI

When the health is leaking through infections...

Rx **WALGADOXTM-100**
Doxycycline 100mg **INJECTION**



- ◆ Broad-spectrum antibiotic used for large variety of infections.
- ◆ Doxycycline has high diffusion in tissues and organs.¹
- ◆ Used in prophylaxis and treatment of several potential biological warfare agents.²
- ◆ Doxycycline has anti-inflammatory and immunomodulatory property.³
- ◆ Efficacy of doxycycline in treating urogenital chlamydia infection is 100%.⁴

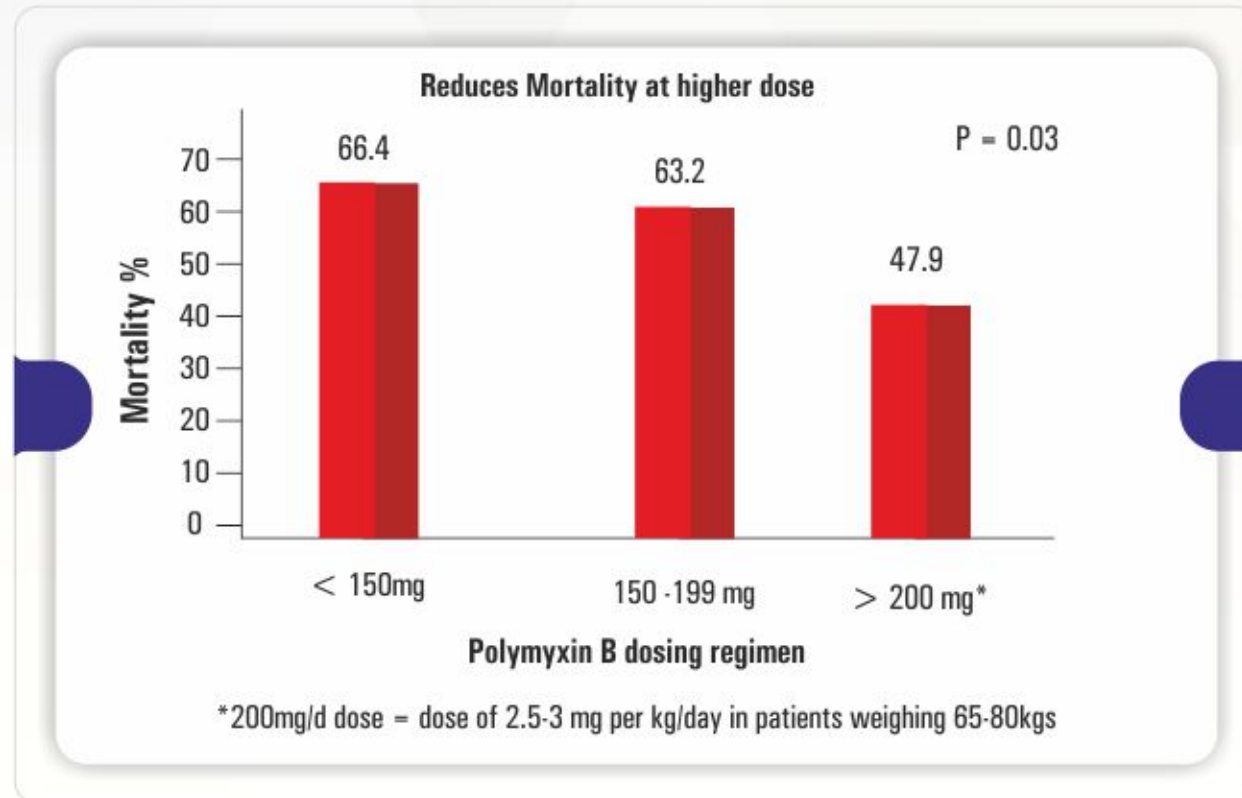
Indications:

- » Respiratory tract infections
- » Sexually transmitted disease
- » Urinary tract infections
- » Rickettsia Infection
- » Intra-abdominal infections
- » Pelvic inflammatory disease
- » Skin and soft tissue infections
- » Acne

WALGADOX-100...Effective barrier between health and infection

For Serious MDR Gram Negative Infections

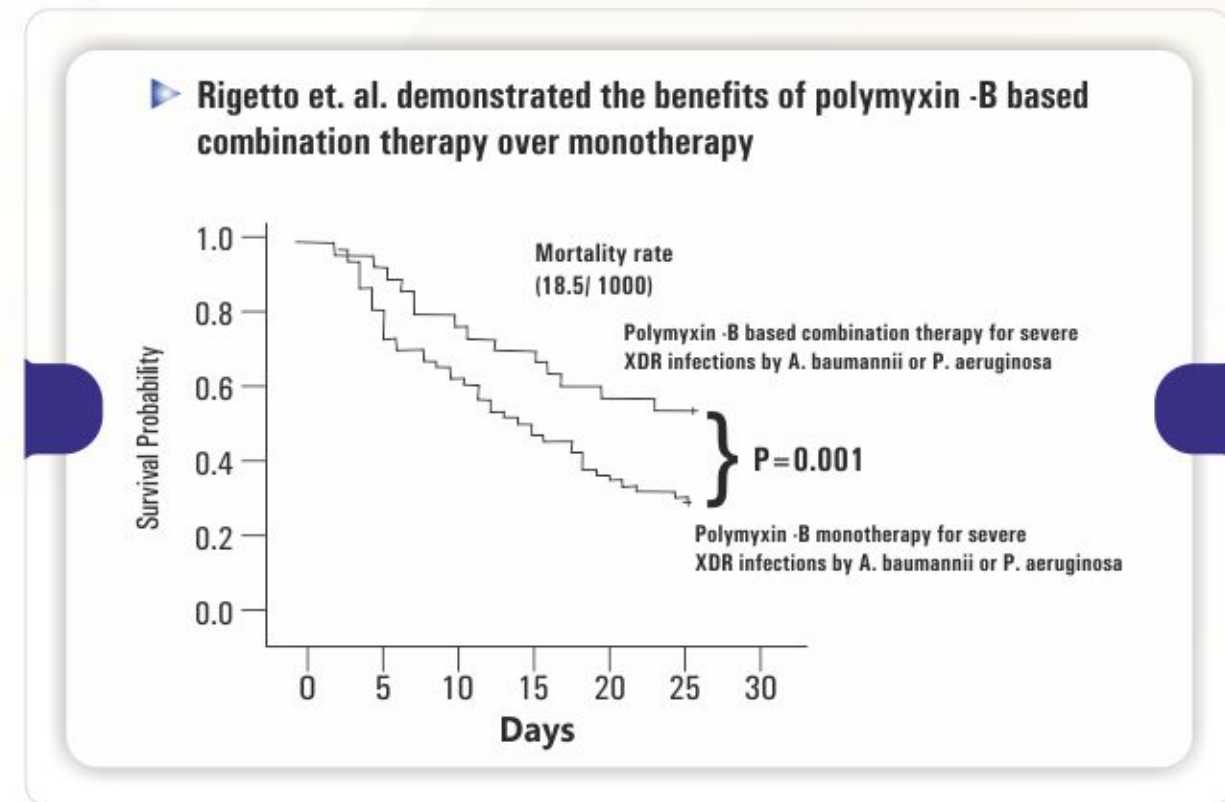
- ▶ Survival benefit with polymyxin B high dose



- ▶ Negligible renal excretion -4%
- ▶ Reducing the Frequency of polymyxin -B dosing showed delayed onset of nephrotoxicity in animals studies
- ▶ Recent studies (based on RIFLE and AKIN criteria) Average nephrotoxicity - 15 %

PAMPHILOXIN-B™ POLYMYXIN B SULPHATE 5,00,000 UNITS INJECTION

Combat Resistance... Celebrate Life



CONCLUSION : POLYMEXX - B combination with carbapenems significantly reduced the risk of mortality in critically ill patients

PAMPHILOXIN-B...Combat Resistance... Celebrate Life

The Leading with Unmatched Stability to Beta-lactamases

^{Rx} CALISTIPIME™-TZ

Cefepime 1gm+Tazobactam 125mg

INJECTION



Sensitivity in ESBL positives

	Cefoperazone Sulbactam	Cefepime Tazobactam	Piperacilin Tazobactam	Meropenem	Imipenem
E Coli (179)	110 (61.45)	154 (86.03)	78 (43.75)	162 (90.5)	21 (100%)
Klebsiella (202)	53 (26.2)	84 (41.5)	78 (43.75)	115 (56.9)	115 (56.9)
Proteus Mirabilis (202)	19 (90.4)	20 (95.2)	78 (43.75)	21 (100%)	21 (100%)

The Superior to 3rd Generation Cephalosporins

- Tazobactam generally acts as an irreversible inhibitor and inactivates both plasmid- and chromosomally-mediated beta-lactamases.
- A broad spectrum with enhance coverage against Gram positive & Gram negative pathogen.
- Addition of Tazobactum synergies efficacy of Cefepime
- For the treatment of infection due to ESBL producing organisms

In

- Lower respiratory infections
- Intra-Abdominal infections
- Febrile Neutropenia
- Septicemia
- Skin & soft tissue infections

Deep Vein Thrombosis (DVT) Pulmonary Embolism **may put the patients in critical stage**

ANTITHROM[®]-40/60

Enoxaparin Sodium 40/60mg

INJECTION

- Belongs to the low molecular weight heparin family of medications.
- Enoxaparin binds to anti-thrombin (a circulating anticoagulant) to form a complex that irreversibly inactivates clotting factor Xa.

In

- ▶ Prevention of DVT in Hip Replacement
- ▶ Extended Prophylaxis
- ▶ Prevention of DVT in Knee Replacement
- ▶ Prevention of DVT in Abdominal Surgery
- ▶ Inpatient treatment of DVT w/wo PE
- ▶ Outpatient treatment of DVT w/wo PE
- ▶ Prevention of Ischemia in UA/NSTEMI
- ▶ Prevention of DVT in Medically Ill

...The Trusted Therapy for DVT & PE

The antibacterial with the **Higher Reach**

Tesiplan[®] **400**

Teicoplanin 400 mg

INJECTION



Indications

- » Septicaemia
- » Acute or Chronic Osteomyelitis
- » Septic arthritis
- » Endocarditis

- Initial empirical treatment choice in infections caused by MRSA* or Enterococci¹
- Significantly lower risk of nephrotoxicity compared with Vancomycin²
- Teicoplanin was 2 to 8 fold more active than Vancomycin against Streptococci & Enterococci¹

In Bone & Joint Infections

- » Attains concentration above MICs of most Staphylococci at 1 hour (7.9 to 14.6 mg/kg)³

In Endocarditis

- » Lower MIC & better tolerance against isolates of Enterococci & Staphylococci when compared to Vancomycin⁴

Tesiplan 400 Ultimate Solution for Gram +ve Infections

In The High Risk Pseudomonas & Enterococcal Infections

PAFBACT LYO™

Piperacillin 4gm + Tazobactam 0.5gm

INJECTION

- Empiric therapy for CAP & HAP at risk of Pseudomonas infections^{1,2}
- Surface treated vials - optimal dose delivery³
- Bromo butyl stoppers - prevents moisture entry³

In

- Community Acquired Infection
- UTI • SSTI • HAP
- Peritonitis
- Appendicitis

...Deactivate therapy for sure eradication that saves life

In Life Threatening Infections

Rx **MAFALDAPEN**TM

Meropenem 1000mg

INJECTION



The Time Tested Well Tolerated Antibiotic

- Highly active against Gram Positive, Gram Negative as well as anaerobic organisms
- Penetrates well into tissues and body fluids
- Exhibits superior potency over imipenem (four to 32 fold greater) against Enterobacteriaceae isolates especially proteus mirabilis

In

- LRTI (HAP/VAP) • UTI
- Febrile Neutropenia • SSTI
- Meningitis • Septicemia
- Intra Abdominal Infection
- Nosocomial Infections

MAFALDAPEN...The Anti Effective Warrior in Urgent Need

Ultimate Warrior MAFALDAPEN-XPTM

Meropenem 1000mg + Sulbactam 500mg

INJECTION



Fixed dose combination of Meropenem 1 g & Sulbactam 0.5 g injection has excellent efficacy & good tolerability in the management of lower respiratory tract infections caused by Gram -ve pathogens in adults³

Well Tolerated Acceptable & Safe

- Synergistically active & safe fixed dose combination¹
- Sulbactam inhibits plasmid mediated metallo- β -lactamases¹
- Meropenem plus sulbactam was effective against multiresistant isolate of *A. baumannii*²

In

- SSTI
- Intra Abdominal Infection
- Bacterial Meningitis
- HAP
- Septicemia
- ICU Infection
- Gynaecological Infection
- Febrile Neutropenia
- LRTI

Long Term High dose Mono therapy for severe infections

R INGWAPEN™

Imipenem 500mg + Cilastatin 500 mg

INJECTION



Offers High Clinical Success Rate:

Indications	Age Group	Clinical Success Rate
Complicated Intra-abdominal infections	Adult	86.60% ³
Sepsis		82% ⁴
HAP & VAP (Nosocomial Pneumonia)		78.20% ⁵
Febrile neutropenic patients	Children	95.50% ⁶
Neonatal Klebsiella Pneumoniae sepsis		73% ⁷

The time tested empiric therapy

- ◆ Potent broad spectrum antibacterial for IV administration
- ◆ IDSA* recommended initial EMPIRICAL treatment in intra abdominal infection¹
- ◆ Highly documented & recommended in Febrile neutropenia
- ◆ Wide spectrum action against aerobes & anaerobes

In

- Infections in Dialysis Patient
- Intra Abdominal Infections
- Gynecological Infections
- Diabetic Foot Infections
- Endocarditis
- LRTI & UTI Infections

Widely prescribed immediate performer

1. CID 2010;50 (15 January) • Solomkin et al
 3. Antibiot Khimioter. 2003;48(3):4-41.
 5. Diagn Microbiol Infect Dis. 2010 Oct;68(2):140-51.
 7. Indian J Pediatr. 1998 Jan-Feb;65(1):121-9

2. American Journal Of Respiratory And Critical Care Medicine Vol 171 2005
 4. Can J Infect Dis Vol 9 No 4 July/August 1998 * IDSA - Infectious Disease Society of America
 6. Asian Pacific Journal of Cancer Prevention, Vol 10, 2009
 8. Martindale, 35th Edn Vol 1 & Nelson text book of pediatrics, 18th Edn, 2007, Vol 1 pg 1116